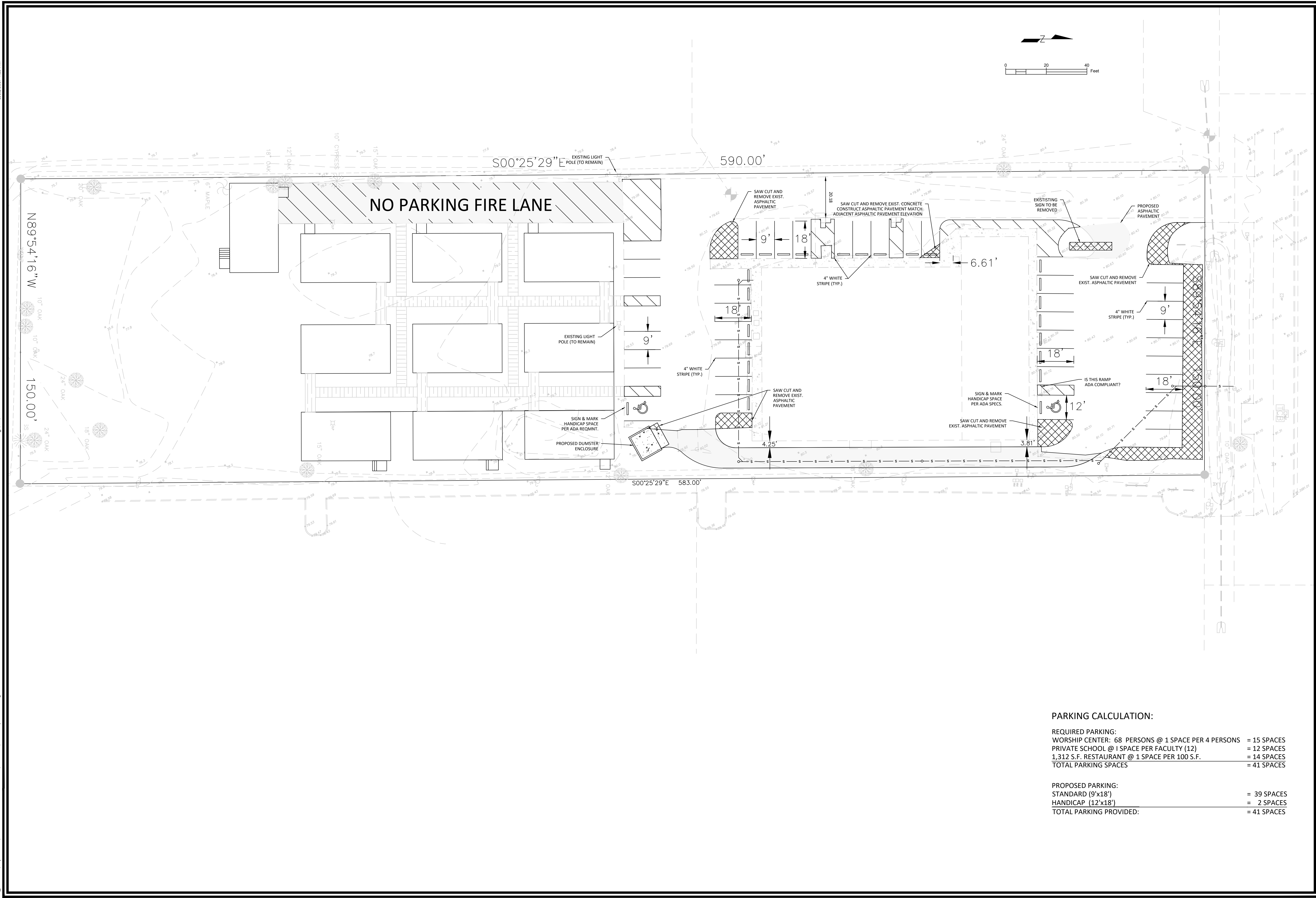


3/23/2017 4:29 PM
R:_CAD FILES\Projects\2017\17108-8950\WB\BH Private School\Sheet Files\Preliminary Site Plan.dwg
grollins



PARKING CALCULATION:

REQUIRED PARKING:	
WORSHIP CENTER: 68 PERSONS @ 1 SPACE PER 4 PERSONS	= 15 SPACES
PRIVATE SCHOOL @ 1 SPACE PER FACULTY (12)	= 12 SPACES
1,312 S.F. RESTAURANT @ 1 SPACE PER 100 S.F.	= 14 SPACES
TOTAL PARKING SPACES	= 41 SPACES
PROPOSED PARKING:	
STANDARD (9'x18')	= 39 SPACES
HANDICAP (12'x18')	= 2 SPACES
TOTAL PARKING PROVIDED:	= 41 SPACES

PREPARED BY: **JORDAN**
JORDAN & ASSOCIATES CONSULTING, INC.
CONSULTANTS | CONSULTING | MANAGEMENT
1000 N. W. 11TH AVENUE, SUITE 200
MIAMI, FL 33136
TEL: 305.584.8174
FAX: 305.584.8174
WWW: JORDAN-CA.COM

PREPARED FOR: **SITE PLAN**

AMERICAN MUSLIM LEADERSHIP CENTER

OSCEOLA COUNTY, FLORIDA SEC 11, TWP 25S, RNG 28E

INFORMATIONAL COPY ONLY. ANALYSIS WITH A VALID PROFESSIONAL ENGINEER'S SEAL

APPROVED BY: _____
RAYMOND C. STANGLE II, P.E.
NO. 41220
DATE: _____

NO.	DATE	REVISIONS

PROJECT NO./FILE NAME	DSGN
JACI JOB #	DRWN
J17108	
SCALE	CHKD
SHEET	C-04